

BOARD OF TRUSTEES OF HARRISON TOWNSHIP  
LICKING COUNTY, OHIO  
MINUTES OF SPECIAL MEETING APRIL 14, 2009  
ROLAND ESTATES INFORMATIONAL MEETING

The Harrison Township Trustees met in Special session on April 14, 2009 at the Kirkersville Elementary School. The meeting was called to order at 7:00 p.m. by the Chairman, Larry Kretzmann. The Fiscal Officer called the roll, and the following member and guests were present:

Chairman	Larry Kretzmann
Trustee	Ray Foor
Trustee	Eric Smith
Fiscal Officer	Carolyn Elder
Guest	Alan Briggs, 5953 Outville Road
Guest	Grant Blaser, 5255 Deeds Road
Guest	Vince Alessi, 5638 Beecher Road
Guest	Debra Alessi, 5638 Beecher Road
Guest	Arlo Dixon, 97 Kelly Marie
Guest	Frank Shortridge, 5623 Beecher Road
Guest	Dottie Shortridge, 5623 Beecher Road
Guest	John Thompson, 5693 Beecher Road
Guest	Don Treiber, 84 Melissa Court
Guest	Chris Flesher, 192 Brandon Drive
Guest	Mike Bates, 40 Brandon Drive
Guest	John T. King, 5612 Beecher Road
Guest	Tom & Cindy Williams, 162 Brandon Drive
Guest	Todd M. Jamison, 65 Thomas Christopher
Guest	Mike Evans, 71 Kelly Marie
Guest	Jeff Spires, 5653 Beecher Road
Guest	Troy & Cindy Huffman, 113 Kelly Marie
Guest	Tim Lollo, Licking County Engineer
Guest	Bill Lozier, Licking County Deputy Engineer/Surveyor
Guest	Patsy F. Scarmack, 116 Kelly Marie Drive
Guest	Jamie Easley, 168 Brandon Drive
Guest	Dan Blatter, District Engineer, LCSWCD
Guest	Bill Evans, LCSWCD
Guest	Tim Bubb, Licking County Commissioner
Guest	Doug Smith, Licking County Commissioner
Guest	Casey Casto

Dan Blatter, District Engineer from the Licking County Soil and Water Conservation District presented a power point presentation (included in minutes) regarding the Roland Estates County Ditch Petition. Mr. Blatter answered questions during and after the presentation.

Licking County Commissioner Tim Bubb explained the Ditch Petition process to the residents. Licking County Commissioner Doug Smith explained that the first county hearing was recessed to allow the Township Trustees to gather more information to present to the residents. Trustee Eric Smith explained that by law the Ditch Petition process is the only way that the Trustees can help with the drainage problems. He also thanked residents for their opinions. Licking County Deputy Engineer, Bill Lozier commented about a retention pond as an option to research further. Trustee Ray Foor felt this option should be investigated and another informational meeting held for residents to add this consideration to the list of options. All officials helped to answer questions. The Trustees thanked residents for attending.

Being no further business, Chairman Larry Kretzmann adjourned the meeting at 8:30 p.m.

Respectively Submitted,

Carolyn I. Elder  
Harrison Township Fiscal Officer

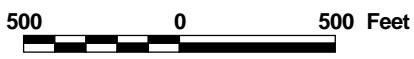
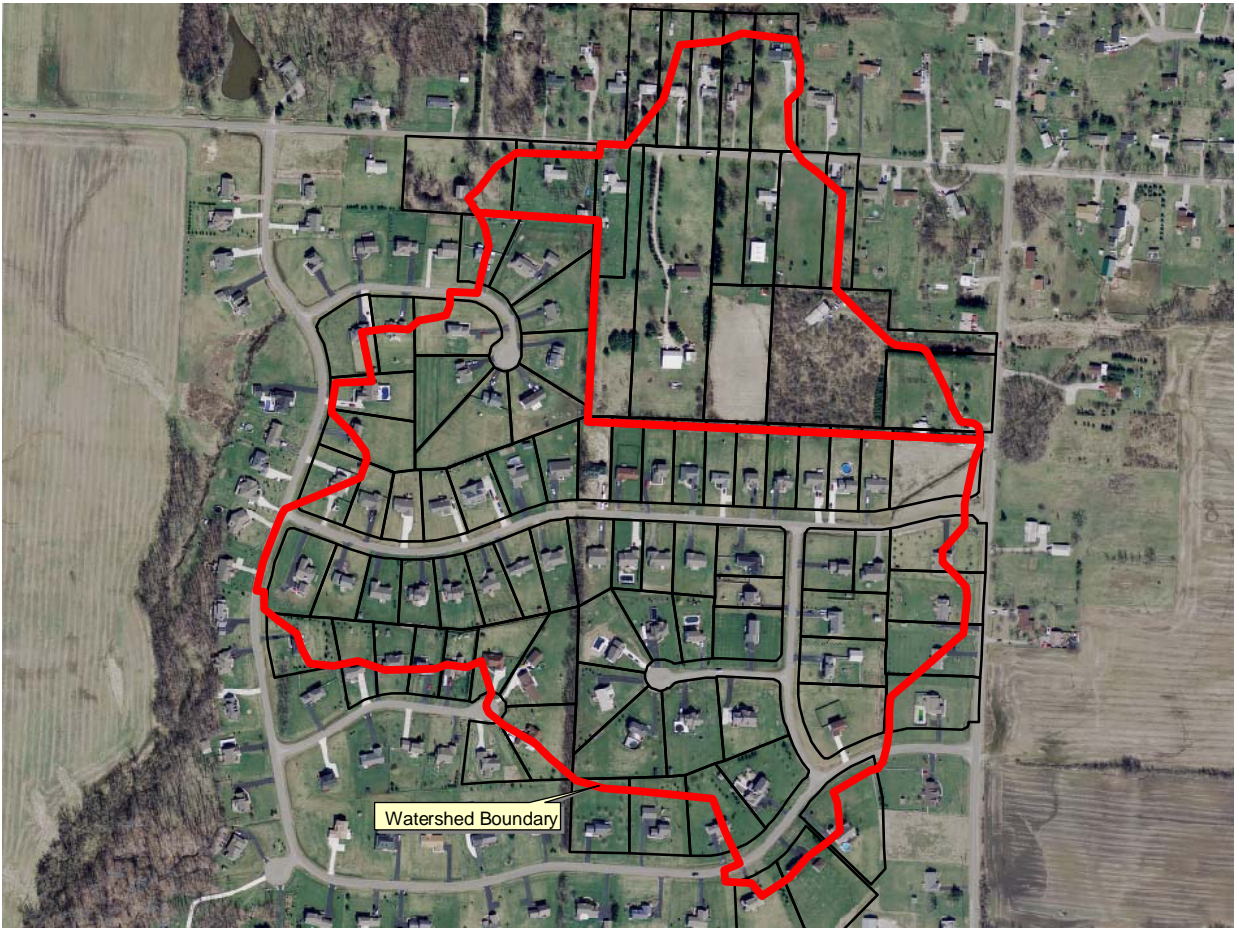
Power Point presentation from the Licking County Soil & Water Conservation District is included in the April 14, 2009 special meeting minutes.

# **ROLAND ESTATES COUNTY DITCH INFORMATION MEETING**

**Kirkersville School  
April 14, 2009 – 7:00pm**

**Harrison Township Trustees  
Licking County Soil & Water Conservation District**

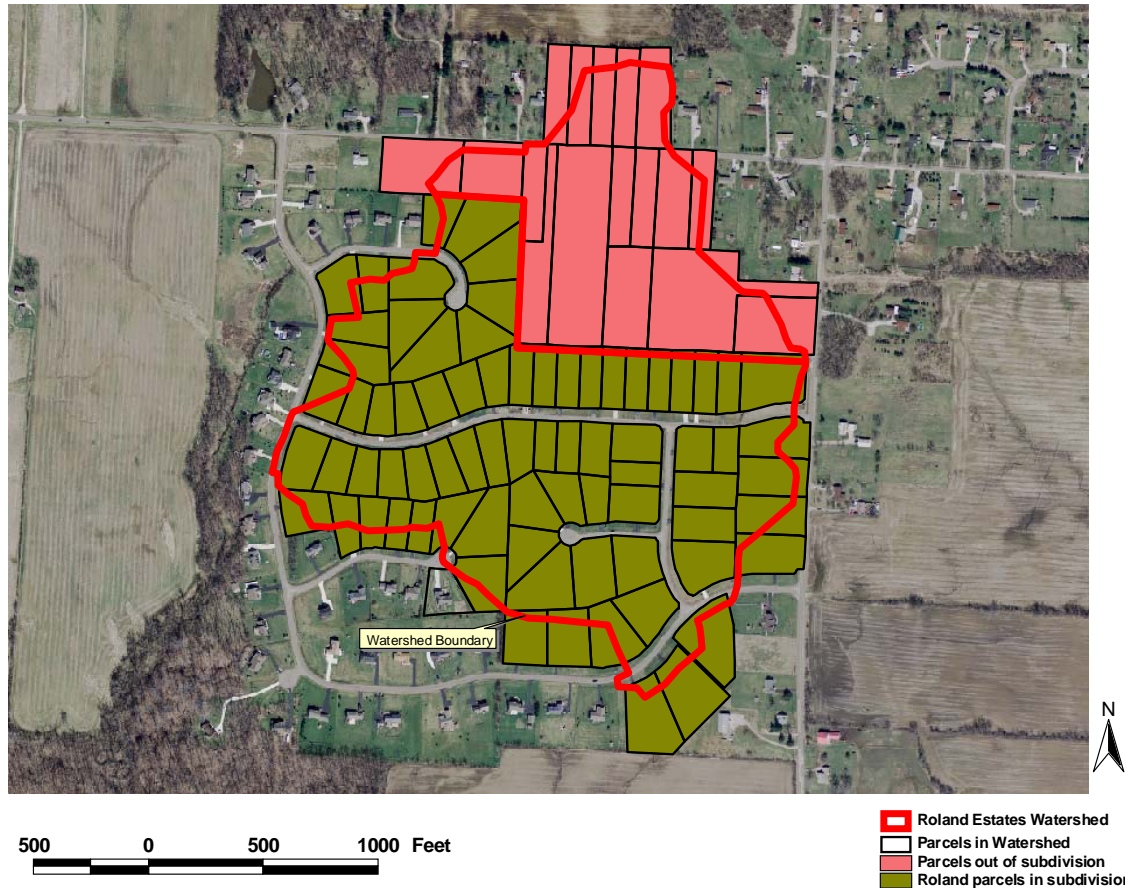
# Drainage Area of 83 acres



-  Roland Estates Watershed
-  Parcels in Watershed

April 14, 2009

# 59 acres within subdivision 24 acres outside of subdivision



# Problems to Address

- ***Flooding of Kelly Marie and adjoining lots***
- ***Area is slow to drain***
- ***Seasonal high water table***
- ***Standing water in swales***
- ***Health concerns due to standing water.***



# **Alternatives Considered:**

- **1 - Storm Sewer (closed ditches-where presently closed, extending closed pipe where practical)**
- **2 - Open Ditches (remove buried pipes in road ditches, upgrade driveway culverts)**
- **3 - Tile Drainage with Pump (drain tile below ditches or storm sewer for ground water)**

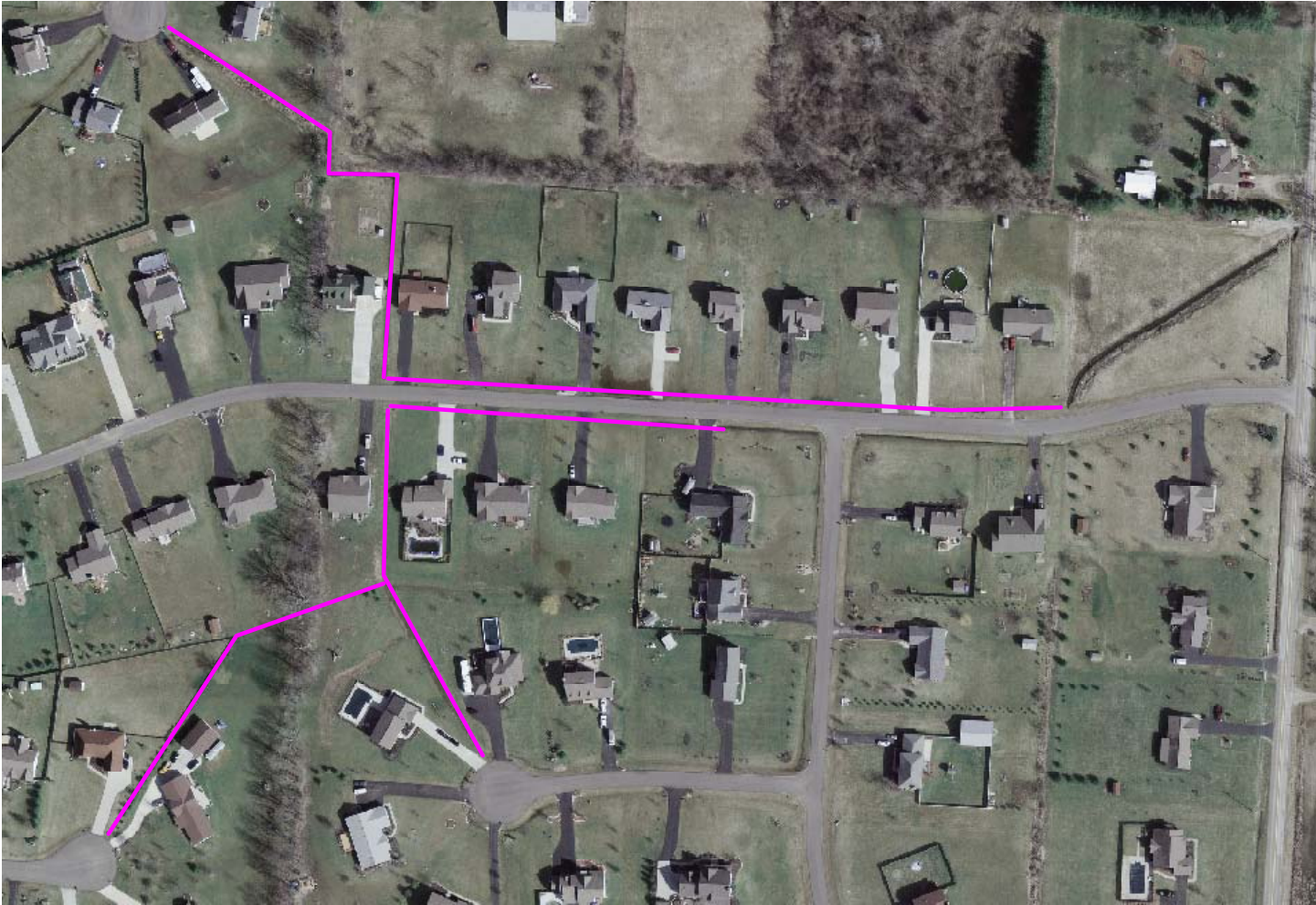


# 1 – Storm Sewer

- **Requires replacement of all driveway culverts in the path.**
  - **Driveways grades are to be low enough to pass extra surface flow in large storms.**
- **Maintains the present appearance and ease of yard care.**
- **Will provide an outlet conduit for sump pump discharge.**
- **Downspout connections permitted (although not encouraged)**
- **Proposed storm sewer at a lower bottom elevation than present pipes.**
- **Large pipes will be elliptical concrete to obtain the most capacity in the available**

# Alt. 2

## Option 2: Open Ditches



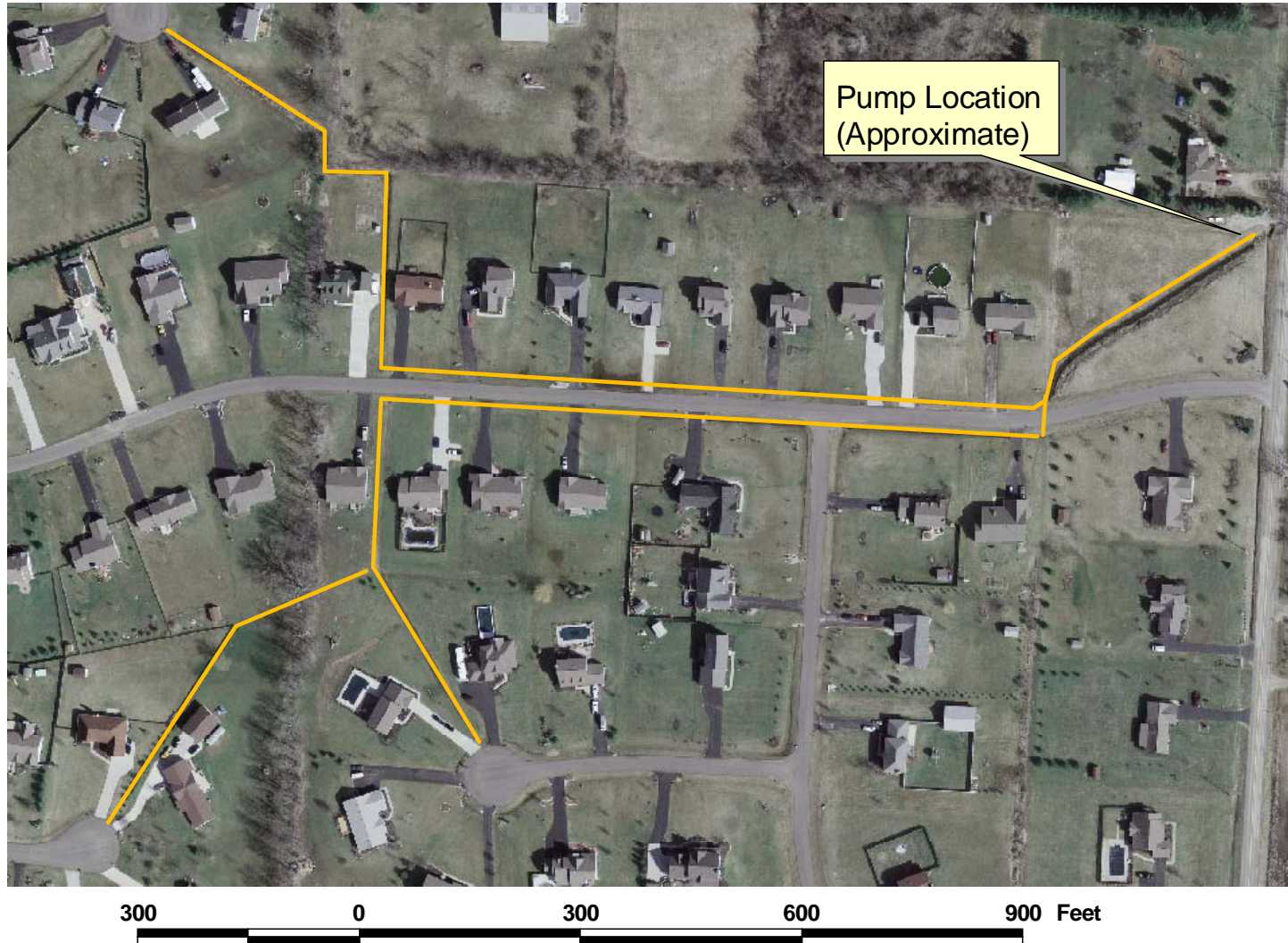
April 14, 2009

# 2 – Open Ditches

- Restores designed ditch storage capacity
- Requires replacement of all driveway culverts along lower section of Kelly Marie Drive
  - Driveway entrances to be made low enough to pass extra surface flow in large storms.
- A not recommended without part 3.
- Recreates open ditches that are flat and hard to maintain, will likely have standing water.
- Recreates some of the problems presently eliminated or hidden (with the closed pipes now in place) without part 3.

# Alt. 3

## Option 3: Tile Drainage w/ Pump



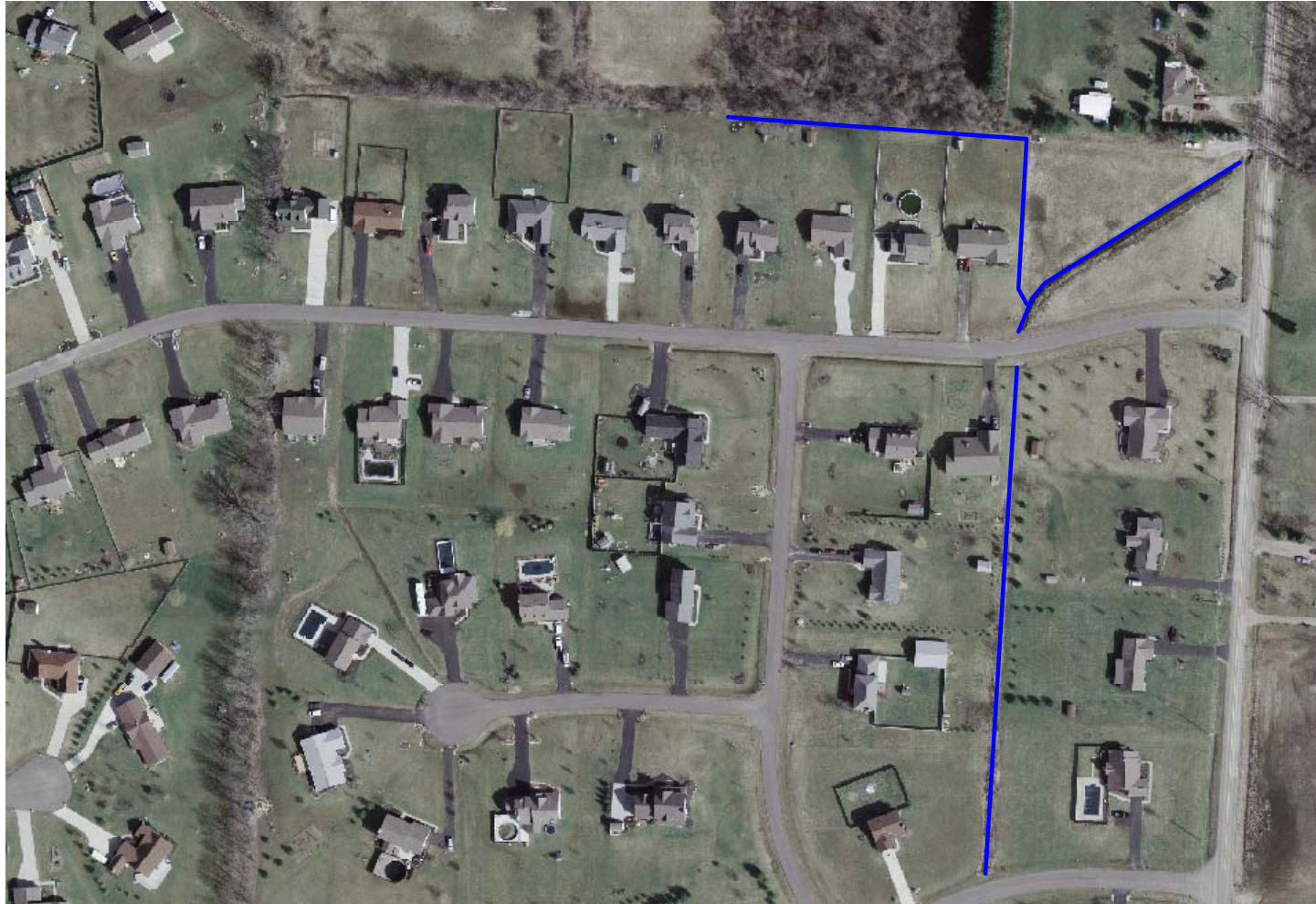
April 14, 2009

# 3 – Tile Drainage with Pump

- **Would lower water table and improve soil drainage along the roadway and swales.**
- **WOULD NOT SOLVE wet basement problems. (No option will solve those problems).**
- **No open inlet for surface water would be allowed:**
  - **No sump pump connections allowed.**
  - **No downspout connections allowed.**
  - **No surface inlets from low spots allowed.**
- **Maintenance cost would include a monthly electric bill charged to the maintenance fund.**

# Includes:

## Option 4: Features Common to all Alternatives



300 0 300 600 900 Feet



April 14, 2009

# **Features Common to all Alternatives:**

- **Improve & maintain ditch across corner lot.**
- **Replace tubing with Lateral line plus underdrain behind Thomas Christopher Dr. lots south to Brandon Dr.**
- **Install interceptor tile from north, behind lots 133-135 for drainage intercepted at a Beecher Road culvert.**

# Additional Information

- **Only minor work east of Outville Rd.**
  - **No additional ditch depth can be obtained for >300ft.**
  - **Many trees would need cleared along the way to access ditch.**
  - **Present channel is open and stable.**
  - **Present Outville Rd. culvert has adequate capacity.**

# Additional Information

- **Other general site information**
  - **Present condition peak discharges are less than pre-development peak discharges.**
    - **Due to larger lots (on average) than most developments with water & sewer.**
    - **Therefore, downstream properties should not be affected.**
      - *No need for special detention structure.*

# Estimated Construction costs:

- **1 - Storm sewer –\$189,500**
- **2 - Open Ditches –\$87,600**
- **3 - Tile Drainage with Pump – \$76,300**
- **2 + 3 – \$151,100**
- **1 + 3 – \$253,000**

# What will Project Cost?

- ***Items listed in ORC to be assessed for construction:***
  - **Constructions Costs (the bid amount)**
  - **Engineering Costs - \$10,000 est.**
  - **Mailing & Notice Fees - \$1000 est.**
  - **First-year Maintenance – 2% construction**

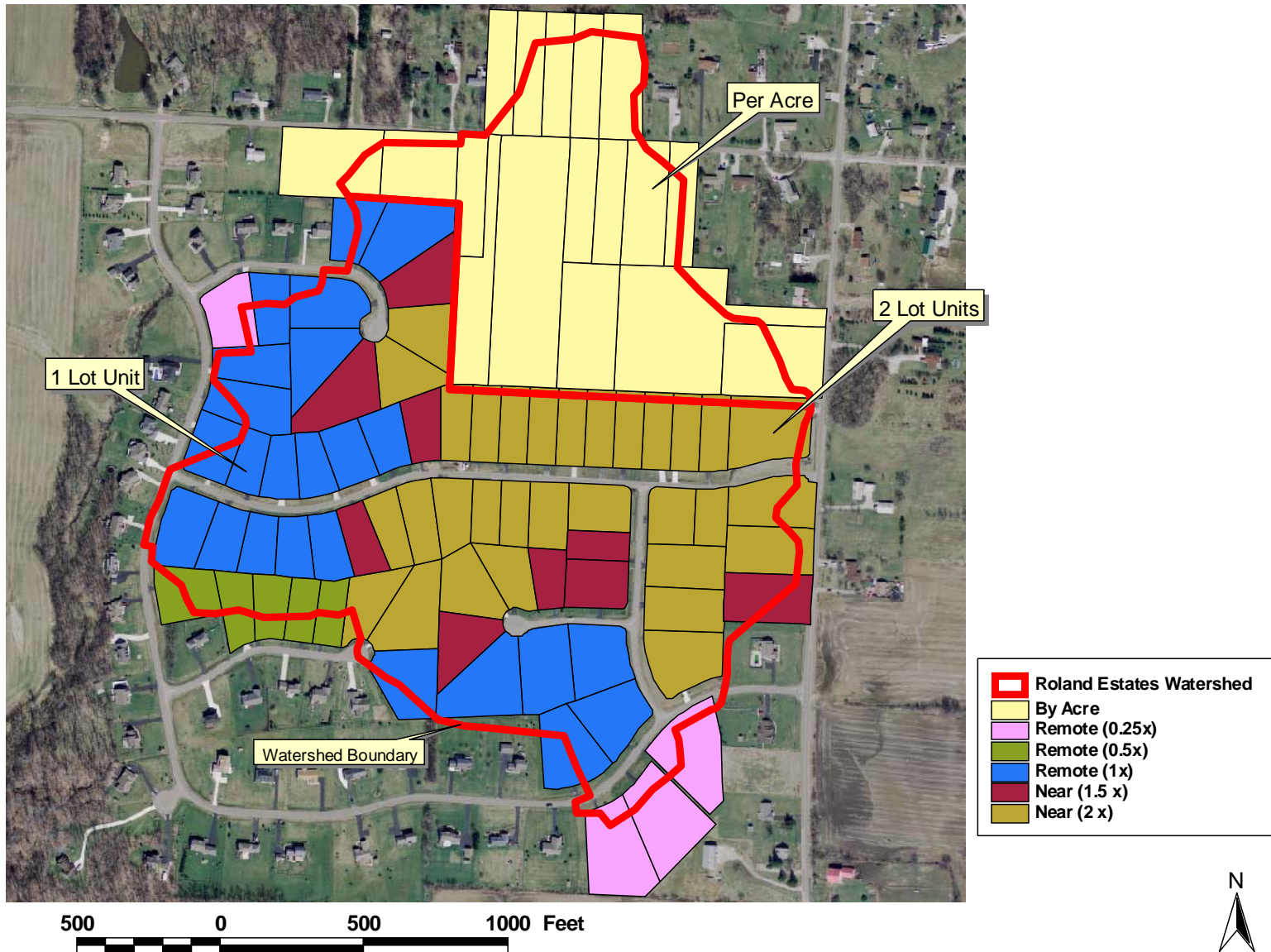
# Estimated Assessment totals:

- *Alt. 1 - \$204,300*
- *Alt. 2 - \$100,400*
- *Alt. 3 - \$88,900*
- *Alt. 2+3 – 165,200*
- *Alt 1+3 – 269,100*

# Assessment Method

- ***Area outside of subdivision – by area (ac.)***
- ***Area within subdivision by lot (or partial lot)***
- ***Lots next to improvement pay more than those farther away.***

# Map of Assessment Method



April 14, 2009

# Assessment Range:

- ***Range of Assessments:***
- ***By Acre – up to \$200 per acre***
- ***Per Lot Unit – \$640 to \$2220***
  - ***2x lots: \$1280 to \$4440***
  - ***1.5x lots: \$960 to \$3330***
  - ***0.5x lots: \$320 to \$1110***
  - ***0.25x lots: \$160 to \$555***

**END**